

TV Tilt Mount Bracket 37-70" Full Wall Plate

04MM-TB07

- » Tilt mount wall bracket 37-70" with full wall mounting back plate
- » Tilt adjustable -10 to +10° with easy grip knobs for quick adjustment and locking
- » Heavy duty 75kg load rating
- » Compatible with all hole patterns including VESA standard
- » Built in bubble level for easy installation



Projector Ceiling Mount

04MM-TB09

- » Heavy duty universal projector mount
- » 360° rotation and 15° tilt for maximum viewing ability
- » 10kg load rating
- » 130-320mm mounting adjustment
- » Cable management system built in



TV Tilt and Swivel Bracket 37-70" Heavy Duty

04MM-TB08

- » Heavy duty tilt and swivel extension bracket for large TV's 37-70"
- » Heavy duty 60kg load rating
- » Compatible with all hole patterns including VESA standard
- » Dual support arms for maximum stability
- » 645mm back plate for mounting across two studs
- » Built in level adjustment + or -3°



Ceiling Mount Pole

04MM-TB10

- » Heavy duty ceiling mount extension bracket for use with 04MM-TB06 and 04MM-TB07
- » 360° rotation adjustment for optimal viewing
- » Height adjustable range from 1050mm to 1620mm
- » 75kg load rating



For the Best

TV Bracket Range



TOLL FREE 1800 237 425
WWW.MATCHMASTER.COM.AU



TV Tilt and Swivel Wall Mount 23-42"

O4MM-TB01

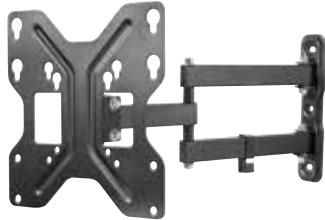
- » Heavy Duty LCD wall bracket suitable for 23-42" TV's
- » Swivelling and 360° rotating mounting plate to allow for maximum flexibility and for viewing in portrait or landscape
- » Easy 3 step installation with built in bubble level
- » Slide in VESA plate for easy installation and detachment
- » 20kg load rating
- » Anti-theft design



TV Tilt and Swivel Dual Arm Wall Mount 23-42"

O4MM-TB02

- » Heavy Duty dual arm LCD wall bracket suitable for 23-42" TV's
- » Tilt and swivel adjustable for maximum viewing flexibility
- » Keyhole pattern allows for easy installation
- » Suitable for corner mounting
- » 30kg load rating



TV Rail Mount Bracket 32-55"

O4MM-TB03

- » Simple to use rail mount bracket for flush mounting TV's
- » Ultra slim design (19mm)
- » Suits TV's 32-55"
- » Built in bubble level
- » 45kg load rating



TV Rail Mount Bracket 37-70"

O4MM-TB04

- » Simple to use rail mount bracket for flush mounting TV's
- » Ultra slim design (19mm)
- » Suits TV's 37-70"
- » Built in bubble level
- » 65kg load rating



TV Flush Mount Bracket 32-55" Full Wall Plate

O4MM-TB05

- » Flush mount wall bracket 32-55" with full wall mounting back plate
- » Compatible with all hole patterns including VESA standard
- » 75kg load rating
- » Built in bubble level for easier installation



TV Flush and Tilt Mount Bracket 37-70" Full Wall Plate

O4MM-TB06

- » Flush mount wall bracket 37-70" with full wall mounting back plate
- » 75kg load rating
- » Locking bar for anti-theft
- » Can be tilted -5° by using supplied mounting arm accessories
- » Compatible with all hole patterns including VESA standard

